



(12) UK Patent (19) GB (11) 2 353 206 (13) B

(45) Date of publication: 06.08.2003

(54) Title of the invention: **A moving yoke assembly**

(51) Int Cl⁷: **F21V 21/30 21/34**

(21) Application No: **0006948.4**
(22) Date of Filing: **23.03.2000**
(30) Priority Data:
(31) **9919396** (32) **18.08.1999** (33) **GB**
(43) Date A Publication: **21.02.2001**

(72) Inventor(s):
Richard Knight

(73) Proprietor(s):
Richard Knight
57A Acland Road, Charminster,
BOURNEMOUTH, DORSET, BH9 1JQ,
United Kingdom

(52) UK CL (Edition V):
A4B B1F B2A B5A1X

(74) Agent and/or Address for Service:
Marks & Clerk
27 Imperial Square, CHELTENHAM,
GL50 1RQ, United Kingdom

(56) Documents Cited:
GB 1406077 A **GB 1188578 A**
DE 002720344 A

(58) Field of Search:
As for published application 2353206 A viz:
UK CL (Edition R) **A4B, A4L LCC, A4V V26,**
F4R RMG, G2J JMM J17D
INT CL⁷ **A45D 42/00 42/16, A47G 1/02**
1/04, F21V 21/14 21/30 21/34
Other: **Online : EPODOC,WPI,JAPIO**
updated as appropriate

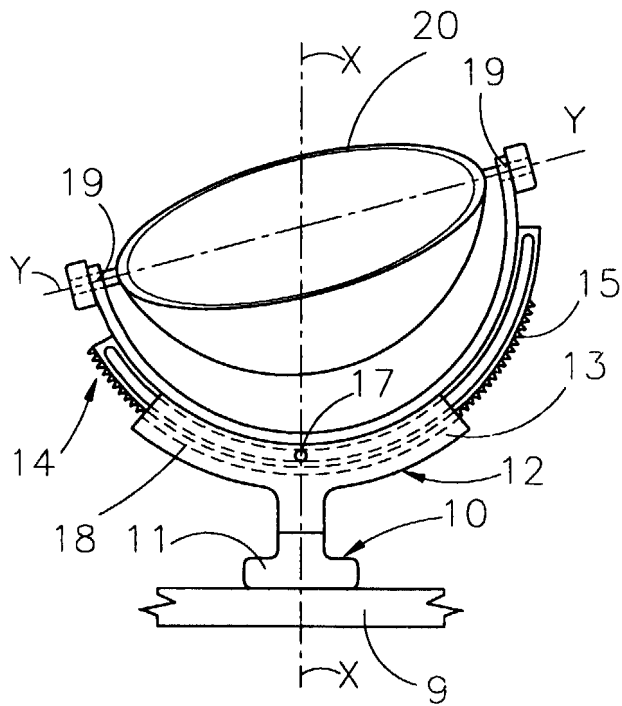


FIG 1

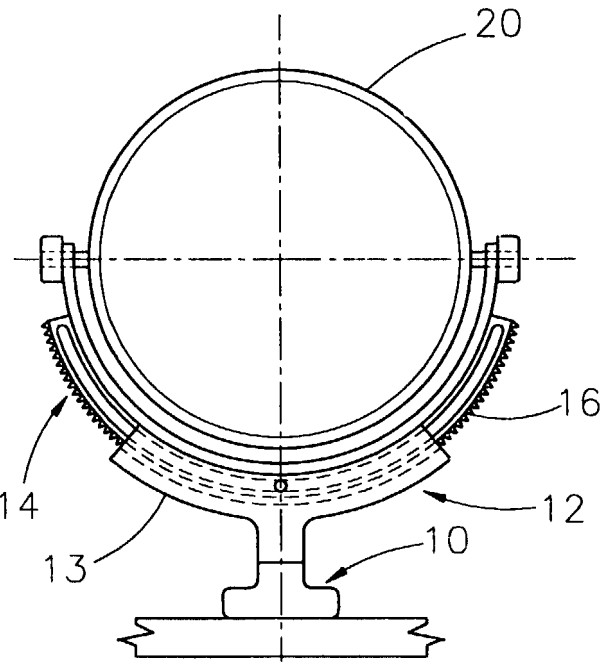


FIG 2

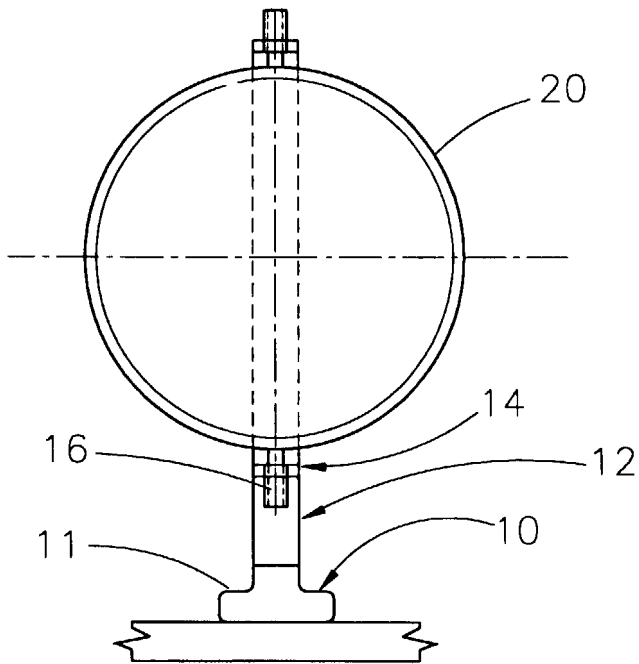


FIG 3

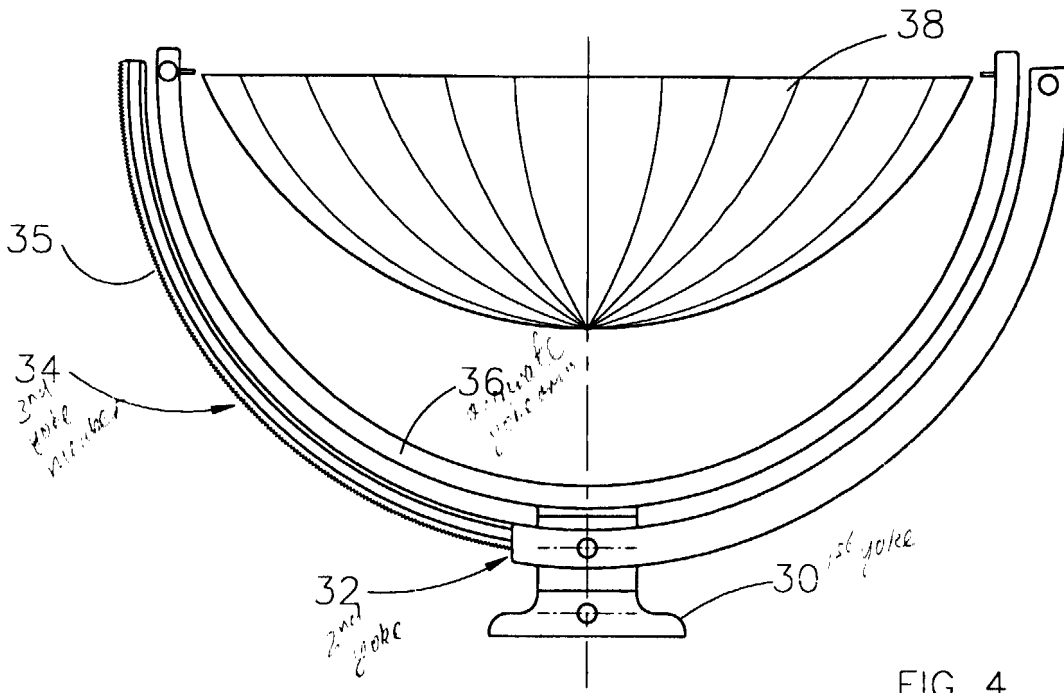


FIG 4

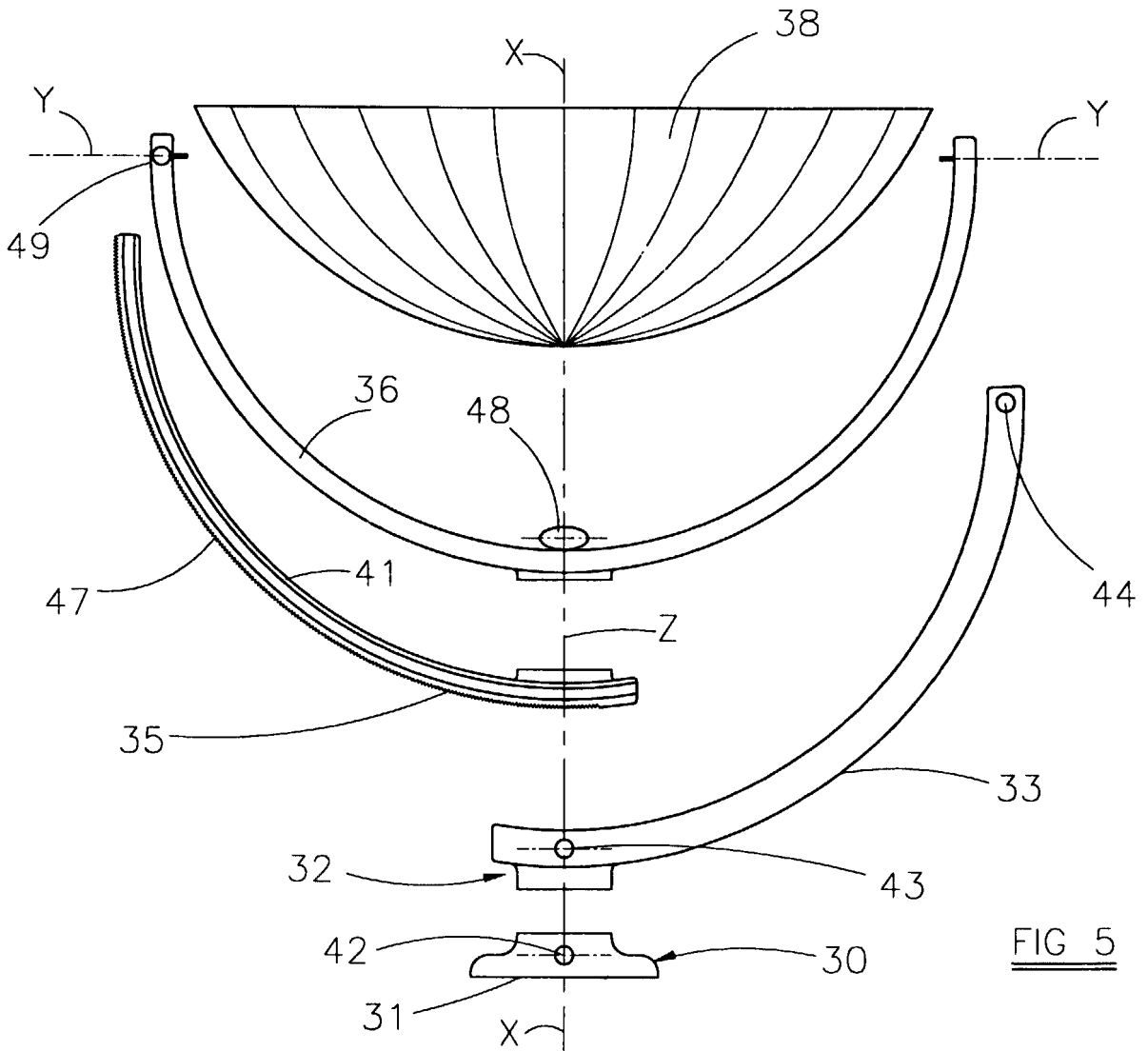


FIG 5

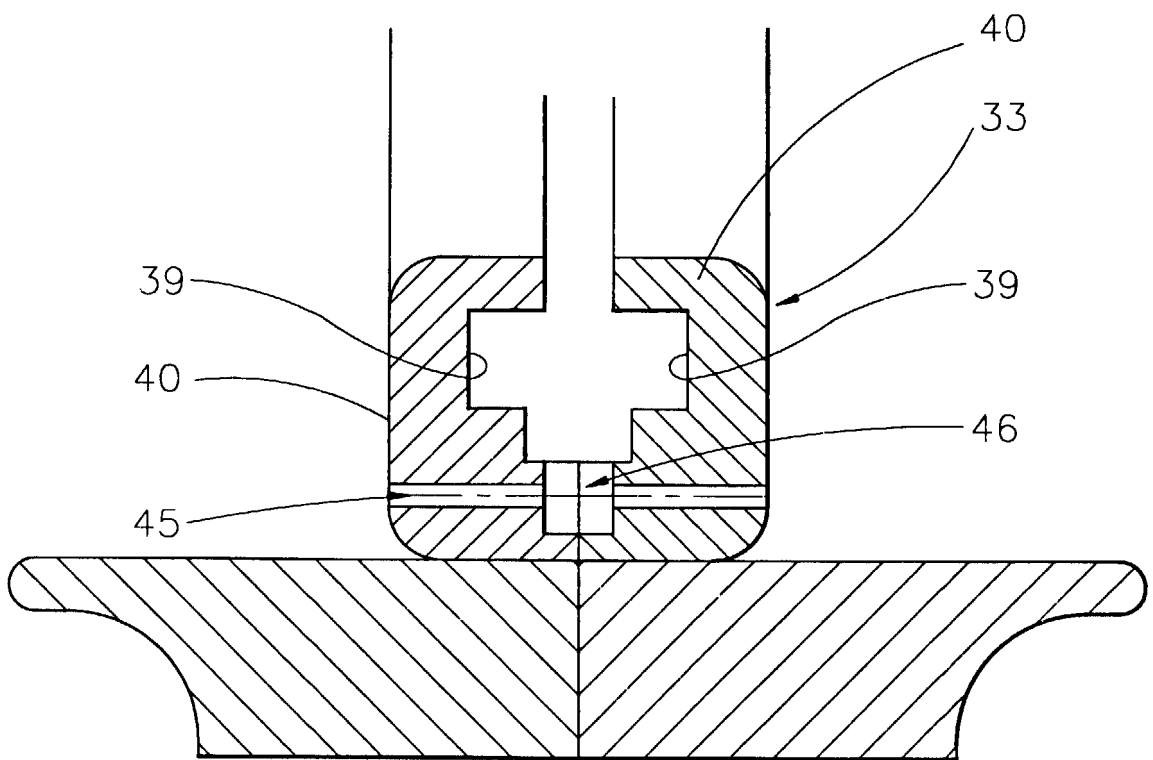


FIG 6

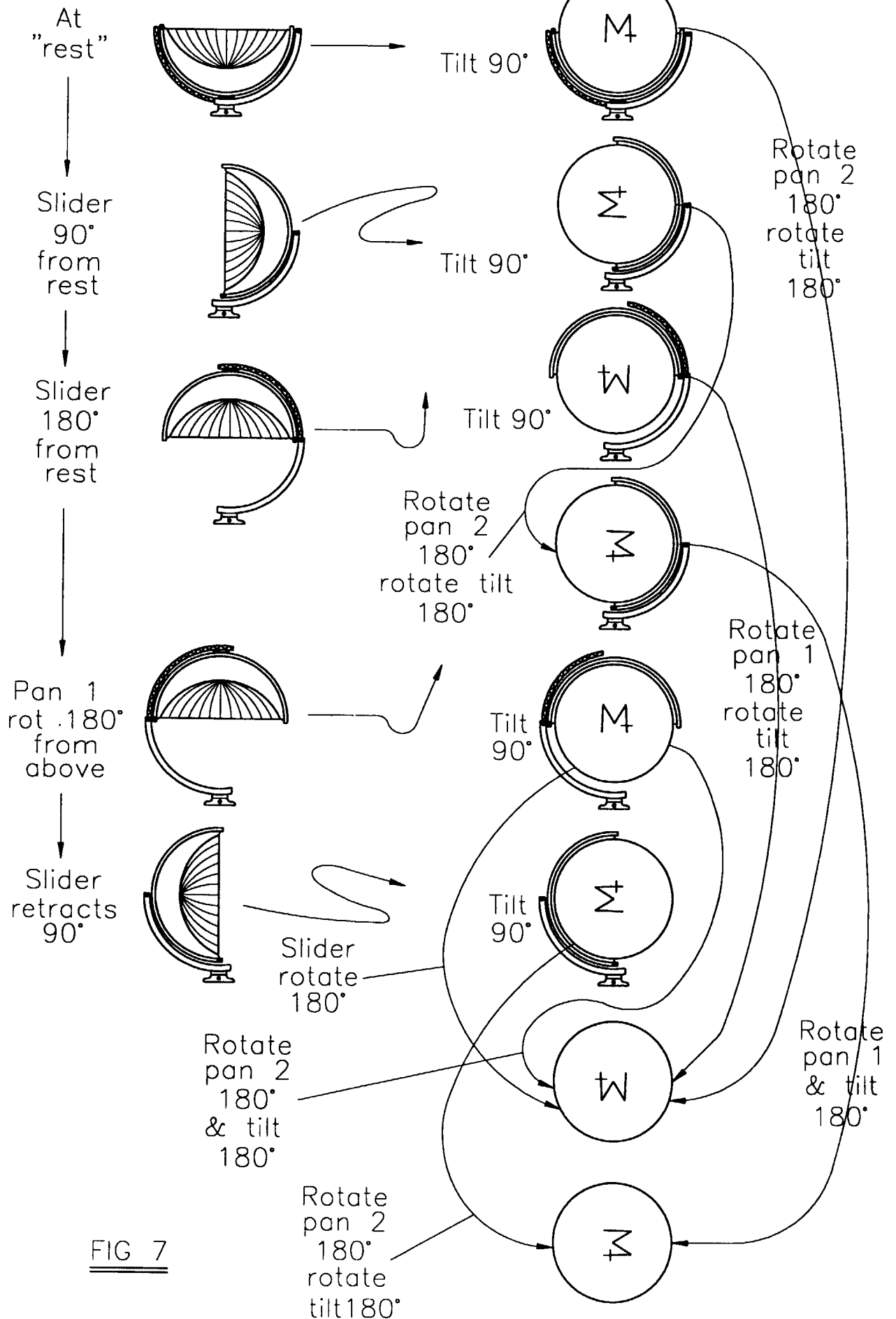


FIG 7

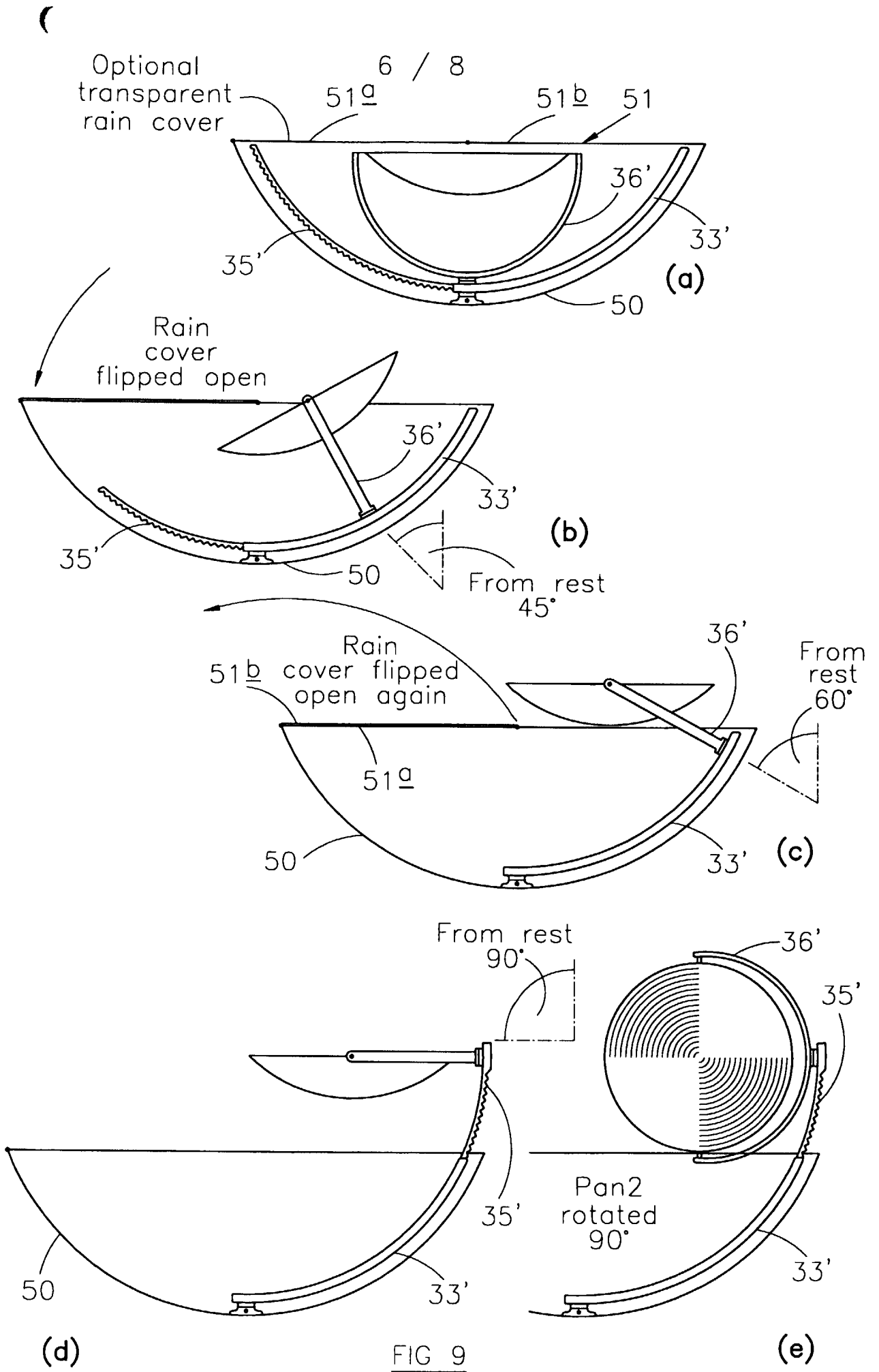


FIG 9

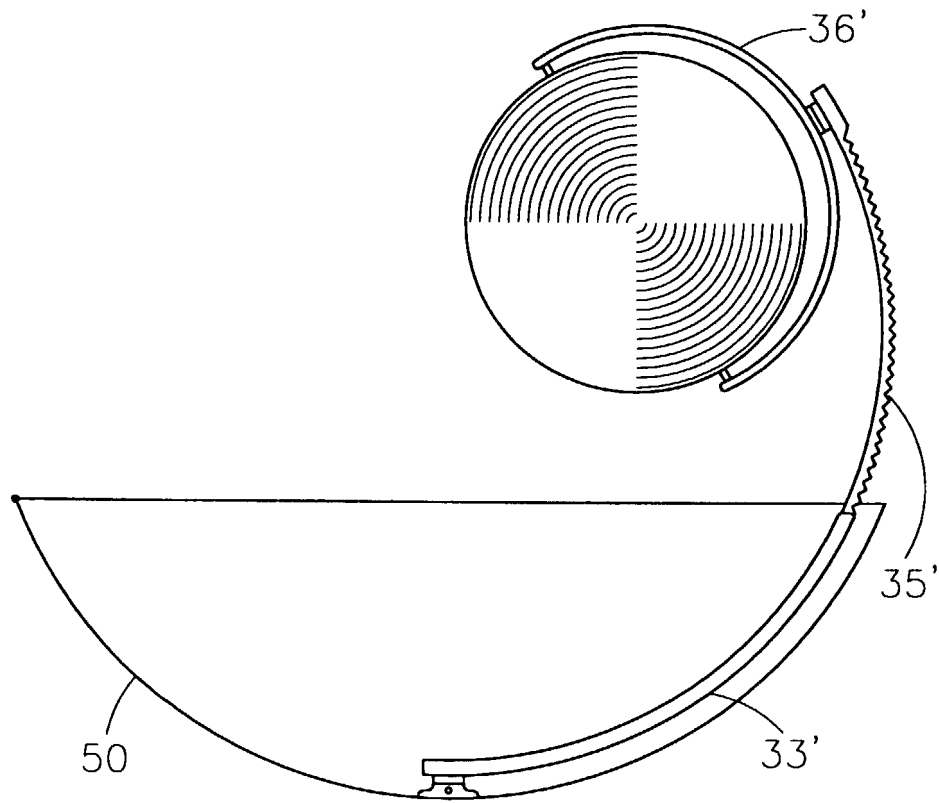


FIG 9 (f)

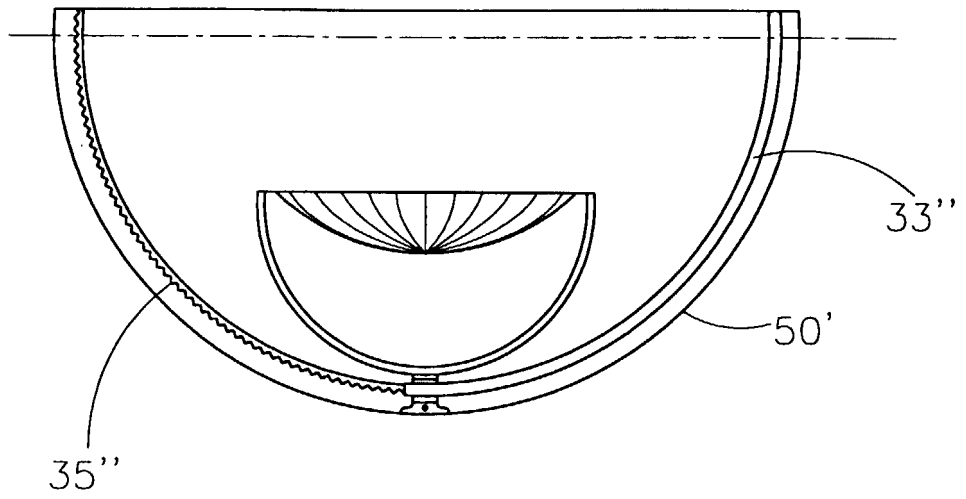


FIG 10(a)

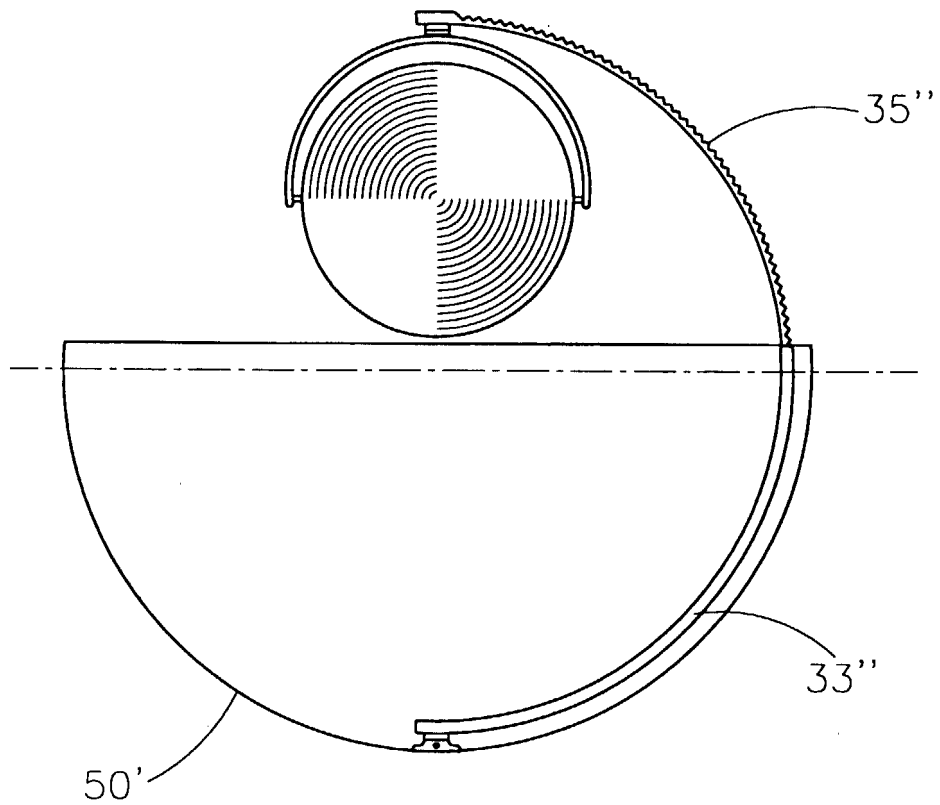


FIG 10(b)

20 40 100
2353206

A MOVING YOKE ASSEMBLY

This invention relates to a moving yoke assembly, particularly but not exclusively for supporting a light, mirror, television monitor, camera or any other
5 device for sending or receiving electromagnetic radiation.

It is known to provide automated lighting including a moving yoke assembly to support the light source. The yoke assembly of this known lighting comprises a platform swivellable about a vertical axis through 360° and support arms upstanding
10 from the platform which support a housing containing a light source for pivotable movement through less than 360° about a horizontal axis. This yoke assembly allows a light source to be swivelled through 360° with the swivel axis extending in a plane which bisects the light source and also allows the light source to be pivoted about the horizontal axis.

15

The present invention seeks to provide a more versatile yoke assembly which allows additional movements to take place.

According to the present invention there is provided a moving yoke assembly
20 comprising a first yoke member, a second yoke member swivellable relative to the first yoke member about a first axis, the second yoke member having an arcuate support portion, and a third yoke member having two parts rotatable relative to one another, one said part having an arcuate portion which is supported by the arcuate portion of the second yoke member for slidable movement relative thereto along an arcuate path.

Preferable and/or optional features of the present invention are set forth in claims 2 to 12, inclusive.

The invention will now be more particularly described, by way of example,
5 with reference to the accompanying drawings, in which:-

Figure 1 is a side view of a moving yoke assembly not in accordance with the invention, the moving yoke assembly being shown supporting a light source in a first position,
10

Figure 2 is a view similar to Figure 1, but showing the light source in a second position,

Figure 3 is an end view of the moving yoke assembly shown in Figures 1 and
15 2 with the light source in the position shown in Figure 1 relative to the third yoke member and with the third yoke member displaced through 90° relative to the second yoke member,

Figure 4 is a side view of a first embodiment of a moving yoke assembly
20 according to the invention, the moving yoke assembly being again shown supporting a light source,

Figure 5 is an exploded view of the moving yoke assembly shown in Figure
4,

Figure 6 is a section taken through line VI - VI of Figure 5, on a much enlarged scale,

Figures 7 and 8 show sequences through which the yoke of Figures 4 to 6 can
 5 be moved,

Figures 9 a - 9f are side views of a second embodiment of a moving yoke assembly according to the invention, mounted in a bowl, and

10 Figures 10a and 10b are side views of a third embodiment of a moving yoke assembly according to the invention, mounted in a bowl.

Referring firstly to Figures 1 to 3 of the drawings, there is shown therein a moving yoke assembly not in accordance with the invention and comprising a first yoke
 15 member 10 having a base 11 for attaching the moving yoke assembly to a support surface 9, bracket, or the like.

The moving yoke assembly also comprises a second yoke member 12 which is swivellable relative to the first yoke member 10 about a first axis X through 360°.
 20 The second yoke member 12 includes an arcuate rocker arm 13.

The moving yoke assembly also comprises a third yoke member 14 having an arcuate slider 15, which is supported by the arcuate rocker arm 13 of the second yoke member 12 for slidable movement relative thereto along an arcuate path. The third

yoke member 14 also includes support means 19 supporting an object such as a light 20, a mirror (not shown), a television monitor (not shown), or a camera (not shown) for pivotable movement about a second axis Y.

5 The three yoke members are movable relative to one another by power operated means. The power operated means are, preferably, in the form of electric motors, typically PMDC motors. A first motor (not shown) swivels the second yoke member 12 relative to the first yoke member 10 through 360°. A second electric motor (not shown) moves the slider 15 relative to the rocker arm 13 along the arcuate path and
10 a third electric motor (not shown) pivots the light 20 about the second axis Y through 360°.

The rocker arm 13 is typically of U-shaped channel section (as shown in Figure 3) and the arcuate slider 15 is typically of T-shaped section (as shown in Figure
15 3) with the leg of the T-shaped slider extending into the channel-shaped section of the rocker arm 13. The free end of the leg of the T-shaped slider is typically provided with a rack 15 which engages with a pinion gear (not shown) rotated by the second electric motor which is supported by the second yoke member 12.

20 Additionally, the slider 15 is guided for movement relative to the rocker arm 13 such as by pins 17 which project from opposite sides of the leg of the T-shaped slider and which extend into arcuate slots 18 in the side walls of the channel-shaped section of the rocker arm 13. Alternatively, in order to provide a greater degree of movement of the slider 15 relative to the rocker arm 13, the rocker arm 13 (or the slider 15) may be

provided with arcuate rails which co-operate with arcuate slots extending along the slider 15 (or rocker arm 13).

The moving yoke assembly described above is versatile. Not only can it swivel the light source 20 about the axis X through 360° , but it can pivot the light source about the axis Y through 360° and it can move the two axes X and Y relative to one another by moving the slider 15 relative to the rocker arm 13.

With this type of moving yoke assembly, when the slider 15 is arranged symmetrically with respect to the rocker arm 13, the axis Y is at right angles to, and coplanar with, the axis X. If the slider 15 is moved through 90° relative to the rocker arm 13 in one or other direction, the axis Y is displaced so as to lie parallel with the axis X and be offset therefrom. An infinite number of intermediate positions are also possible.

15

Movement of the yoke members relative to one another can be effected by computerised control.

Referring now to Figures 4 to 6 of the drawings, the moving yoke assembly shown therein comprises a first yoke member 30 having a base 31 for attaching the moving yoke assembly to a support surface, bracket or the like.

The moving yoke assembly also comprises a second yoke member 32 which is swivellable relative to the first yoke member 30 about a first axis X through 360° .

The second yoke member includes an arcuate rocker arm 33. The rocker arm 33 extends over an angle of 90° and is connected adjacent to one end thereof to the first yoke member 30.

5 The moving yoke assembly also comprises a third yoke member 34 having an arcuate slider 35, which is supported by the arcuate rocker arm 33 of the second yoke member 32 for slidable movement relative thereto along an arcuate path, and an arcuate yoke arm 36 which is rotatable relative to the slider 35 about a third axis Z and which includes support means 37 supporting a light 38 or other object for pivotable movement
10 about a second axis Y.

The slider 35 extends over an angle of 90° and the yoke arm 36 extends over an angle of 180° . The axis of rotation Z between the slider 35 and the yoke arm 36 passes through the slider 35 at or adjacent to one end thereof and passes through the
15 yoke arm 36 midway between its ends.

As shown in Figure 6, the rocker arm 33 is of channel section and has guide slots 39 in opposing walls 40. The slider 35 is slidably mounted in the channel section of the rocker arm 33 and has laterally projecting, arcuately extending, guide rails 41
20 which co-operate with the guide slots 39.

A first motor, shown schematically at 42, is provided to swivel the rocker arm 33 relative to the first yoke member 30. This movement is referred to later as PAN
1.

Second and third motors, shown schematically at 43 and 44, move the slider 35 relative to the rocker arm 33. The motors 43, 44 are located adjacent to opposite ends of the rocker arm 33 and rotate respective shafts mounted in respective bores 45 in the rocker arm 33 (see Figure 6). A pinion is secured to each shaft and is located in a respective recess 46 at the bottom of the channel-shaped rocker arm 33. The pinions cooperate with a rack 47 on the base of the slider 35 to move the latter relative to the rocker arm 33.

10 A fourth motor, shown schematically at 48, is provided to rotate the yoke arm 36 relative to the slider 35. This movement is referred to later at PAN 2.

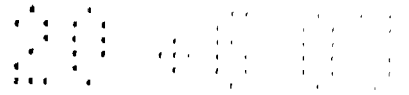
A fifth motor, shown schematically at 49, is provided to pivot the light 38 relative to the yoke arm 36. This movement is referred to later as TILT.

15

The moving yoke assembly shown in Figures 4 to 6 is more versatile than that shown in Figures 1 to 3. Typical sequences of movement of the yoke are shown in Figures 7 and 8 with the various movements described using the terms PAN 1, PAN 2 and TILT referred to above and with movements of the slider 35 relative to the rocker arm 33 being referred to using the term SLIDER.

20

The moving yoke assembly shown in Figure 9 is similar to that shown in Figures 4 to 6, but the yoke is mounted in a bowl 50 and the radii of the rocker arm 33' and the slider 35' are significantly greater than the radius of yoke arm 36'. The bowl 50



could be mounted, for example, in a floor, wall, roof, the side of an ocean liner, an aeroplane, a ceiling, a bathroom cabinet (with the light 38 replaced by a shaving mirror) or a unit at the foot of a hotel bed (with the light 38 replaced by a television monitor). When the yoke is stored in the bowl 50, it may be protected by an openable or
5 removable cover. The cover could, for example, take the form of a transparent rain cover 51 formed in two parts 51a and 51b hingedly connected together.

The moving yoke assembly shown in Figure 10 is similar to that shown in Figure 9, but the bowl 50' is hemi-spherical, and of smaller radius, and the rocker arm
10 33'' and the slider 35'' are also of smaller radii and extend over a greater angle.

In all embodiments, the light could be supported by the slider for pivotable movement about an axis at right angles to the axis Y, instead of about the axis Y, and the light could be replaced by a mirror, television monitor or other object.
15

The embodiments described above are given by way of example only and various modifications will be apparent to persons skilled in the art without departing from the scope of the invention.

CLAIMS

1. A moving yoke assembly comprising a first yoke member, a second yoke member swivellable relative to the first yoke member about a first axis, the second yoke member having an arcuate support portion, and a third yoke member having two parts rotatable relative to one another, one said part having an arcuate portion which is supported by the arcuate portion of the second yoke member for slidable movement relative thereto along an arcuate path.
- 10 2. A moving yoke assembly as claimed in Claim 1, wherein the third yoke member has means for supporting an object for pivotable movement about a second axis.
3. A moving yoke assembly as claimed in claim 2, wherein the supporting means is provided on one of the two parts of the third yoke member.
- 15 4. A moving yoke assembly as claimed in Claim 2 or claim 3, wherein the object is a light source.
- 20 5. A moving yoke assembly as claimed in any one of claims 2 to 4, wherein the second axis is coaxial with or intersects the first axis at any position of the third yoke member.
6. A moving yoke assembly as claimed in any one of claims 2 to 4, wherein the

third yoke member can be arranged in a position relative to the second yoke member such that the second axis is perpendicular to, and coplanar with, the first axis and can be moved from this position through an arcuate path of 90° in order to bring the second axis parallel to, and offset from, the first axis.

5

7. A moving yoke assembly as claimed in any one of the preceding claims, wherein the two parts of the third yoke member are rotatable relative to one another about a third axis.

10 8. A moving yoke assembly as claimed in claim 7, wherein the third axis is coaxial with or intersects the first axis at any position of the third yoke member.

9. A moving yoke assembly according to any one of the preceding claims, wherein the yoke includes power operated means for swivelling the second yoke
15 member relative to the first yoke member about said first axis, for sliding the arcuate portion of the third yoke member relative to the arcuate portion of the second yoke member and, where the third yoke member has support means, for pivoting the support means about said second axis.

20 10. A moving yoke assembly as claimed in Claim 9, wherein the power operated means are electric motors.

11. A moving yoke assembly according to any one of the preceding claims, wherein the third yoke member includes an arcuate rack engageable with at least one

pinion gear which can be rotated to move the third yoke member relative to the second yoke member along said arcuate path.

12. A moving yoke assembly as claimed in Claim 11, wherein the said one part
5 of the third yoke member includes the rack and the other said part is rotatable relative to the said one part.

13. A moving yoke assembly as hereinbefore described with reference to Figures
4 to 8, Figure 9, and Figure 10 of the accompanying drawings.